



Integrated S1000D & ATA iSpec 2200  
Publications  
Lifecycle Management System

# WebX Systems Overview

- ❑ XML Software Solution Provider for Structured Document Creation, Multi-channel Publishing, Content Management Systems and Workflow
- ❑ Privately owned, British company with its head office at Gatwick Airport
- ❑ WebX Systems established In 1999
- ❑ Over 13 years in XML Software Development
- ❑ Experts in S1000D and ATA iSpec 2200 standards



First Point,  
Buckingham Gate,  
London Gatwick Airport,  
West Sussex RH6 0NT, UK

Tel.: 44 (0) 1293 897 127  
Fax: 44 (0) 1293 800 404  
[www.webxsystems.com](http://www.webxsystems.com)

# WebX Products Overview

---



## **Integrated Enterprise CSDB Content Lifecycle Management**

Comprehensive and powerful, commercial off-the-shelf (COTS), Common Source Database solution for S1000D, ATA iSpec 2200 and legacy data.



## **Integrated Technical Authoring Editor**

Full-featured XML technical authoring editor, optimized for creating well-formed and valid S1000D data modules and ATA iSpec 2200 tasks.



## **Advanced XML Publishing Server**

A comprehensive solution for automated production of complex long PDF documents.

## **Advanced XML Desktop Publishing**

Powerful WYSIWYG XML authoring, publishing and stylesheet creation system.

## Stylesheet Packs

### **Out of the Box Stylesheets**

S1000D Issues 1.8 to 4.1 Book

S1000D to AESP / BR

ATA iSpec 2200 CMM / SB

Etc...

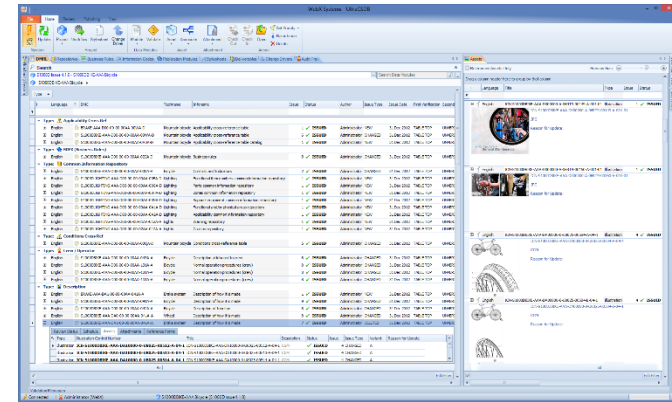
---

## WebX Systems - UltraCSDB

S1000DBIKE-AAA Bicycle (S1000D Issue 4.1.0)

# UltraCSDB®

- **UltraCSDB® provides centralized management,** workflow, storage and retrieval of projects, data modules, digital assets, business rules, publication modules, stylesheets, repositories, deliverables and more.
- Out of the box support for S1000D Issue 1.8 to 4.1, Shipdex, ATA iSpec 2200 and non-structured legacy data.
- Supports all S1000D data module types.
- **Unparalleled easy-to-use** and responsive rich graphical user interface.
- One system and database for management of different project types, requires minimal training.
- Publish to PDF, tablet devices, website and IETP-X formats.



# UltraAuthor™

WebX Systems Hierarchy - [DMC-S1000DBIKE-AAA-D00-00-00-00AAA-258A-A\_008-00\_EN-US.x...]
File Edit View Schema Review

**Clipboard**

Find / Replace

**Schema**

- para
  - SEQUENCE
    - CHOICE (0 - Infinity)
      - functionalItemRef functionalItemNumber functionalItemNumber
      - circuitBreakerRef circuitBreakerNumber circuitBreakerNumber
      - controlIndicatorRef controlIndicatorNumber controlIndicatorNumber
      - inlineSignificantData significantParaDataType significantParaDataType
      - quantity quantityType quantityType
      - internalRef internalRefId internalRefId
      - changeInline id id
      - emphasis emphasisType emphasisType
      - symbol infoEntityIdent id
      - subScript
      - superScript
      - dmRef referredFragment applicRefId
      - pmRef applicRefId id
      - externalPubRef applicRefId id
      - footnote footnoteMark applicRefId

**XML Tree**

- dmodule xmlns:xsi http://www.w3.org/2001/XMLSchema-ns
  - rdf:Description
    - Comment
      - Added <proceduralStep> container to
    - identAndStatusSection
    - content
    - refs
    - referencedApplicGroup
    - procedure
    - preliminaryRqmts
    - mainProcedure
    - proceduralStep
    - proceduralStep
    - proceduralStep
    - proceduralStep
    - para Remove the grease from the freewheel ass
    - internalRef
    - internalRef
    - internalRef
    - randomList
    - listItem
    - para sprockets
    - listItem
    - listItem
    - listItem

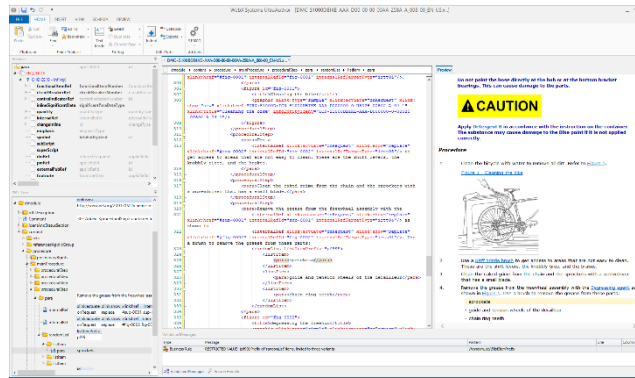
**XML Code**

```

dmodule > content > procedure > mainProcedure > proceduralStep > para > randomList > listItem > para
305 <xlink:href="#fig-0001" internalRefId="fig-0001" internalRefTargetType="irtt01"/>.
306 </para>
307 <figure id="fig-0001">
308 <title>Cleaning the bike</title>
309 <graphic xlink:type="simple" xlink:actuate="onRequest" xlink:
310 show="new" xlink:href="URN:S1000DBIKE-AAA-D000000-0-U8025-00502-A-04-1"
311 xlink:title="Cleaning the bike" infoEntityIdent="ICN-S1000DBIKE-AAA-D000000-0-U8025
312 -00502-A-04-1"/>
313 </figure>
314 </proceduralStep>
315 </proceduralStep>
316 <para>Use a
317 <internalRef xlink:actuate="onRequest" xlink:show="replace"
318 xlink:href="#seq-0002" internalRefId="seq-0002" internalRefTargetType="irtt05"/> to
319 get access to areas that are not easy to clean. These are the shift levers, the
320 knobby tires, and the brakes.
321 </para>
322 </proceduralStep>
323 <para>Remove the grease from the freewheel assembly with the
324 <internalRef xlink:actuate="onRequest" xlink:show="replace"
325 xlink:href="#sup-0001" internalRefId="sup-0001" internalRefTargetType="irtt04"/> as
326 shown in
327 <internalRef xlink:actuate="onRequest" xlink:show="replace"
328 xlink:href="#fig-0002" internalRefId="fig-0002" internalRefTargetType="irtt01"/>. Use
329 a brush to remove the grease from these parts:
330 <randomList listItemPrefix="pf99">
331 <listItem>
332 <para>sprockets</para>
333 </listItem>
334 <listItem>
335 <para>guide and tension wheels of the derailleur</para>
336 </listItem>
337 <listItem>
338 <para>chain ring teeth</para>
339 </listItem>
340 </randomList>
341 </para>
342 <figure id="fig-0002">
343 <title>Degreasing the freehub</title>
344 <graphic xlink:type="simple" xlink:actuate="onRequest" xlink:
345 show="new" xlink:href="URN:S1000DBIKE-AAA-D000000-0-U8025-00502-A-04-1"
346 xlink:title="Degreasing the freehub" infoEntityIdent="ICN-S1000DBIKE-AAA-D000000-0-U8025
347 -00502-A-04-1"/>
348 </figure>
349 </proceduralStep>
350 </proceduralStep>
351 </proceduralStep>
352 </proceduralStep>
353 </proceduralStep>
354 </proceduralStep>
355 </proceduralStep>
356 </proceduralStep>
357 </proceduralStep>
358 </proceduralStep>
359 </proceduralStep>
360 </proceduralStep>
361 </proceduralStep>
362 </proceduralStep>
363 </proceduralStep>
364 </proceduralStep>
365 </proceduralStep>
366 </proceduralStep>
367 </proceduralStep>
368 </proceduralStep>
369 </proceduralStep>
370 </proceduralStep>
371 </proceduralStep>
372 </proceduralStep>
373 </proceduralStep>
374 </proceduralStep>
375 </proceduralStep>
376 </proceduralStep>
377 </proceduralStep>
378 </proceduralStep>
379 </proceduralStep>
380 </proceduralStep>
381 </proceduralStep>
382 </proceduralStep>
383 </proceduralStep>
384 </proceduralStep>
385 </proceduralStep>
386 </proceduralStep>
387 </proceduralStep>
388 </proceduralStep>
389 </proceduralStep>
390 </proceduralStep>
391 </proceduralStep>
392 </proceduralStep>
393 </proceduralStep>
394 </proceduralStep>
395 </proceduralStep>
396 </proceduralStep>
397 </proceduralStep>
398 </proceduralStep>
399 </proceduralStep>
400 </proceduralStep>
401 </proceduralStep>
402 </proceduralStep>
403 </proceduralStep>
404 </proceduralStep>
405 </proceduralStep>
406 </proceduralStep>
407 </proceduralStep>
408 </proceduralStep>
409 </proceduralStep>
410 </proceduralStep>
411 </proceduralStep>
412 </proceduralStep>
413 </proceduralStep>
414 </proceduralStep>
415 </proceduralStep>
416 </proceduralStep>
417 </proceduralStep>
418 </proceduralStep>
419 </proceduralStep>
420 </proceduralStep>
421 </proceduralStep>
422 </proceduralStep>
423 </proceduralStep>
424 </proceduralStep>
425 </proceduralStep>
426 </proceduralStep>
427 </proceduralStep>
428 </proceduralStep>
429 </proceduralStep>
430 </proceduralStep>
431 </proceduralStep>
432 </proceduralStep>
433 </proceduralStep>
434 </proceduralStep>
435 </proceduralStep>
436 </proceduralStep>
437 </proceduralStep>
438 </proceduralStep>
439 </proceduralStep>
440 </proceduralStep>
441 </proceduralStep>
442 </proceduralStep>
443 </proceduralStep>
444 </proceduralStep>
445 </proceduralStep>
446 </proceduralStep>
447 </proceduralStep>
448 </proceduralStep>
449 </proceduralStep>
450 </proceduralStep>
451 </proceduralStep>
452 </proceduralStep>
453 </proceduralStep>
454 </proceduralStep>
455 </proceduralStep>
456 </proceduralStep>
457 </proceduralStep>
458 </proceduralStep>
459 </proceduralStep>
460 </proceduralStep>
461 </proceduralStep>
462 </proceduralStep>
463 </proceduralStep>
464 </proceduralStep>
465 </proceduralStep>
466 </proceduralStep>
467 </proceduralStep>
468 </proceduralStep>
469 </proceduralStep>
470 </proceduralStep>
471 </proceduralStep>
472 </proceduralStep>
473 </proceduralStep>
474 </proceduralStep>
475 </proceduralStep>
476 </proceduralStep>
477 </proceduralStep>
478 </proceduralStep>
479 </proceduralStep>
480 </proceduralStep>
481 </proceduralStep>
482 </proceduralStep>
483 </proceduralStep>
484 </proceduralStep>
485 </proceduralStep>
486 </proceduralStep>
487 </proceduralStep>
488 </proceduralStep>
489 </proceduralStep>
490 </proceduralStep>
491 </proceduralStep>
492 </proceduralStep>
493 </proceduralStep>
494 </proceduralStep>
495 </proceduralStep>
496 </proceduralStep>
497 </proceduralStep>
498 </proceduralStep>
499 </proceduralStep>
500 </proceduralStep>
501 </proceduralStep>
502 </proceduralStep>
503 </proceduralStep>
504 </proceduralStep>
505 </proceduralStep>
506 </proceduralStep>
507 </proceduralStep>
508 </proceduralStep>
509 </proceduralStep>
510 </proceduralStep>
511 </proceduralStep>
512 </proceduralStep>
513 </proceduralStep>
514 </proceduralStep>
515 </proceduralStep>
516 </proceduralStep>
517 </proceduralStep>
518 </proceduralStep>
519 </proceduralStep>
520 </proceduralStep>
521 </proceduralStep>
522 </proceduralStep>
523 </proceduralStep>
524 </proceduralStep>
525 </proceduralStep>
526 </proceduralStep>
527 </proceduralStep>
528 </proceduralStep>
529 </proceduralStep>
530 </proceduralStep>
531 </proceduralStep>
532
```

# UltraAuthor™

- **UltraAuthor™** provides streamlined authoring of S1000D data modules and ATA iSpec 2200 tasks that comply with both the specification schema and your project business rules.
- **Focused, modern and intuitive.** UltraAuthor includes an easy to read interactive WYSIWYG reflow view that instantly updates when typing and synchronizes with the structured XML code view.
- **Fast and efficient structured data authoring.** Built-in XML snippets for common S1000D and ATA iSpec 2200 structures, scripting for common authoring processes, libraries and an attribute value suggestion system.
- **Built-in support for layered BREX** and ISO standard Schematron validates XML data modules and tasks in real-time to your project business rules and assists in correct selection of BREX defined attribute values.



# UltraXML™

UltraXML 4.5 - [C:\S1000D Issue 1.8-3.0 Standalone Demo.uxd]

File Edit View Insert Format Tools Graphic Image Window Help

para Arial 10pt

Hide elements for this template match

Template Match

- ☐ note/para
- ☐ warning/para
- ☐ caution/para
- ☐ para0/para
- ☐ subpara1/para
- ☐ subpara2/para
- ☐ subpara3/para
- ☐ subpara4/para
- ☐ para0/specpara/para
- ☒ response/para(first-of-type) and not(randist)
- ☐ response/para(randist and first-of-type)
- ☐ response/para(not(first-of-type))
- ☐ step/para
- ☐ step/@dotline="dot" or not(@dotline)/challenge/para
- ☐ step/@dotline="line"/challenge/para
- ☐ step/@dotline="none"/challenge/para
- ☐ step/@dotline="dot" or not(@dotline)/challenge/para
- ☐ step/@dotline="line"/challenge/para
- ☐ step/@dotline="none"/challenge/para
- ☐ drill/para
- ☐ subdrill/para
- ☐ procd/para
- ☐ endmatr/para
- ☐ copyright/para(not(last-of-type))
- ☐ copyright/para(last-of-type)
- ☐ item/para
- ☐ entry/para

Hard Return

Active template breaks

Hard Return

Edt right hand styles

XML DTD XSL

UNCLASSIFIED

webX

PARAGRAPH PROPERTIES...

- Edit
- Find/Replace...
- Insert
- Style
- Text Height
- Text Width
- Line Spacing
- Structure
- Tables
- Colour...
- Effects...
- Rules...
- XML Block Rules...
- Side Rules
- Evaluation String...
- Create New Style...
- Create Bullet Style...
- Edit style

Normal

Bold

Italic

Underline

Double Underline

Strike through

Overbar

ALL CAPS

all lowercase

Outline

Inverse

UNCLASSIFIED

webX

Document Frame Paragraph Text Graphics

Style	Margins
Style Extra	Special top drop 0
Effects	Column top 0mm
Effects	Top 0mm
Effects	Left 95mm
Effects	Right 0mm
Effects	Bottom 0mm
Effects	Max. height 3000mm
Effects	Min. height 0
Effects	Breaks
Effects	Break before para. None
Effects	Break after para. None
Effects	Breaks measured from Baseline
Effects	Keep all with next para. Off
Effects	Keep end with next para. Off
Effects	Keep with last para end Off
Effects	Column
Effects	Balance cols before para. Off
Effects	Balance cols after para. Off
Effects	Break across columns Off
Effects	Column span 0
Effects	Options

Code Editor - (DEMO\_aircrew2)

Edit Insert Codes Options

```
<step dotline="line">
<challenge>
<para>level 2 challenge(line)</para>
</challenge>
<response>
<para>level 2 response</para>
</response>
<step dotline="none">
<challenge>
<para>level 3 challenge(none)</para>
</challenge>
</step>
</challenge>
```

Message Location

- Well Formed XML
- Validating with DTD "aircrew1"
- Valid XML

75% REFL 1763 8262 Frame 1 Left 1<2>6 Set text to all caps

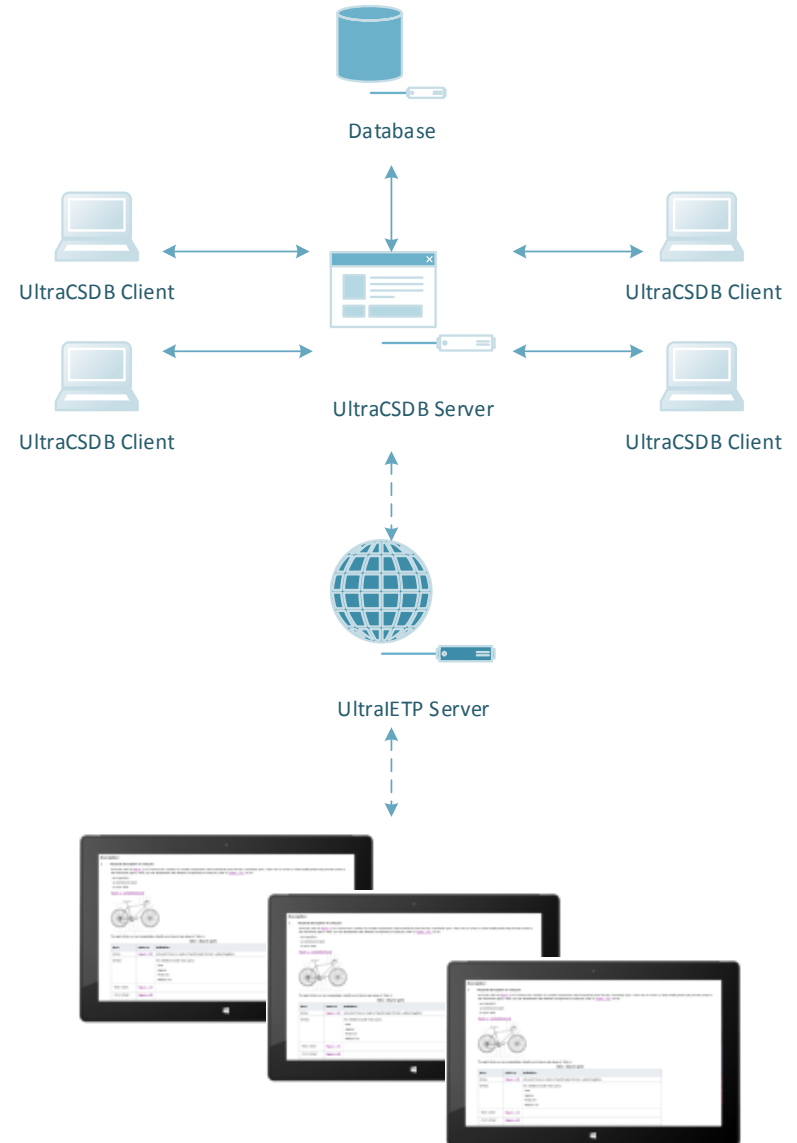


# UltraXML™

- **Advanced XML to PDF publishing and stylesheet creation.**
- Integrated high end composition and pagination engine that utilises **XSLT** technology to enable the formatting and publishing of XML data to PDF, Postscript, hard copies and others.
- UltraXML provides unsurpassed control and flexibility for XML publishing.
- UltraXML™ has advanced support for complex tables, multiple level of running headers and footnotes, table of contents, indexing, raster and vector graphics and comprehensive typographical and typesetting controls.
- UltraXML™ provides an integrated environment that facilitates the process of creating, formatting and publishing structured XML documents.
- High speed formatting of long and complex XML documents.
- UltraXML™ Server integrates with UltraCSDB® and other applications for automated print production.
- Available in **Desktop** and **Server** versions.

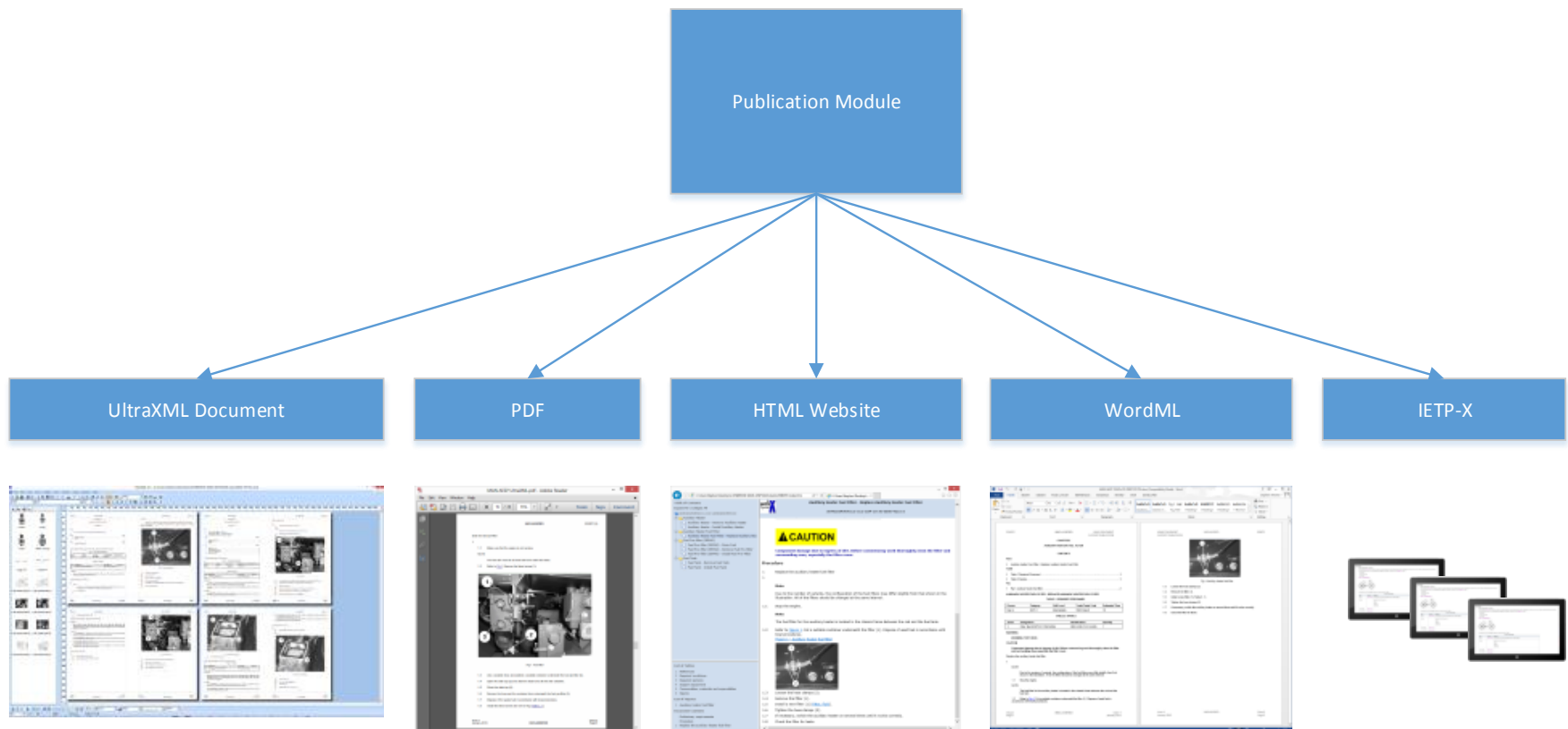
# UltraIETP™ Server

- Delivers Interactive Electronic Technical Publications to multiple devices and platforms
- Multi-touch enabled viewer clients
- Supports CGM/PDF/Movies/3D Graphics
- Dynamically filter by skill level, product variations and environmental conditions.
- Boolean search, annotations, bookmarks, view history
- Optionally synchronizes with UltraCSDB Server  
(Retrieves latest IETP-X deliverables)
- Connected and standalone modes
- HTML 5 Browser and Tablet Application

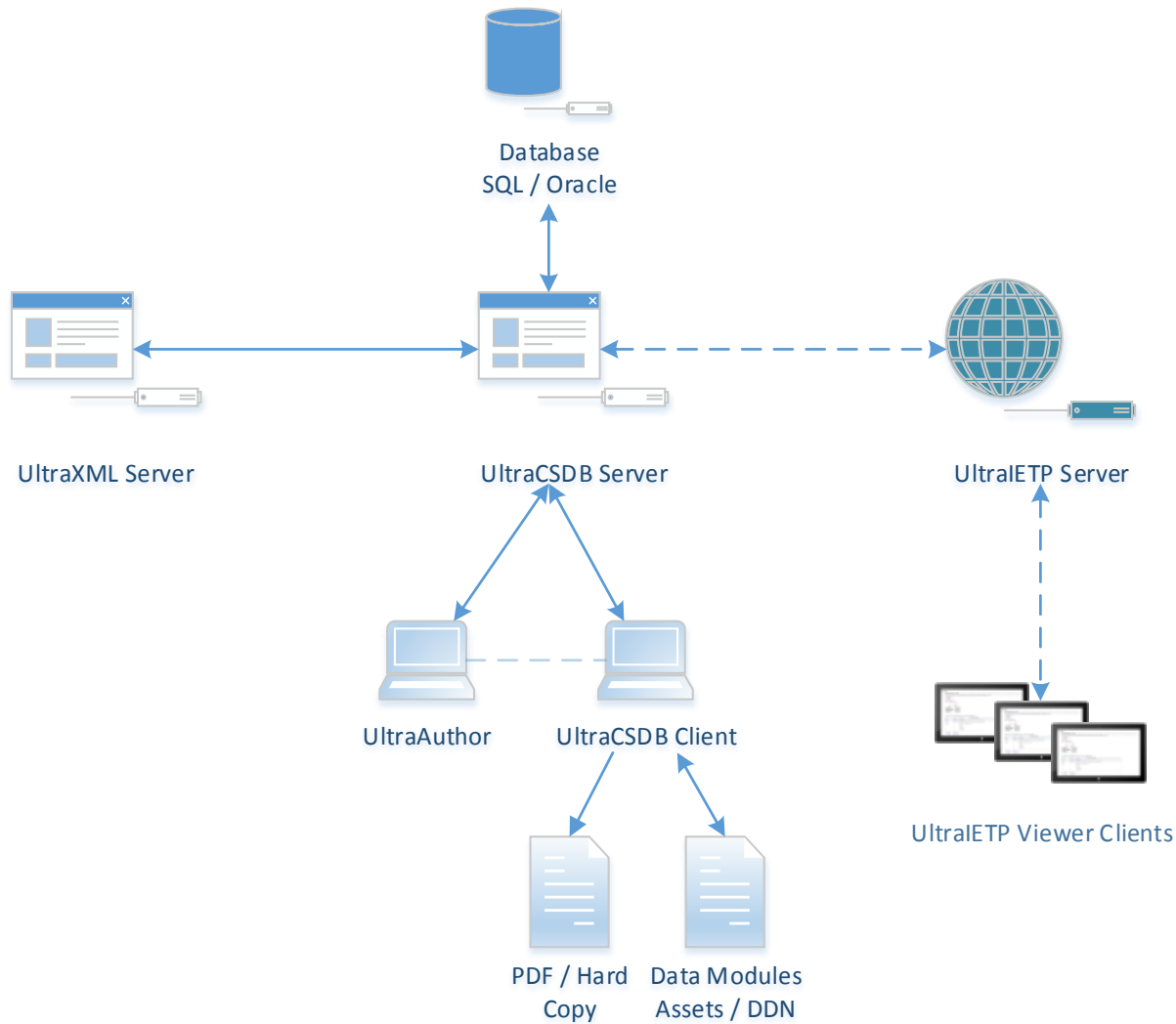


# Publishing S1000D / ATA2200

Publish S1000D Publication Modules into multiple formats and styles



# Integrated Solution



# WebX Solution Benefits

- Comprehensive solution for S1000D, ATA iSpec 2200 & Legacy Documents.
- All software owned by WebX Systems.
- All software developed by WebX engineers using latest technologies.
- Unparalleled easy-to-use, rich graphical user interfaces, requires minimal training.
- Out of the box setup.
- Highly configurable; Allows support for new and additional schemas, DM coding systems and workflow.
- Highly scalable network architecture; Support multiple sites, multiple databases and allow hundreds of concurrent users.
- Cost effective solution, suitable for both small and large installations.
- Integrated client / server architecture with web service APIs.
- Responsive customer support by technical experts.



Q & A Session

Thank You